

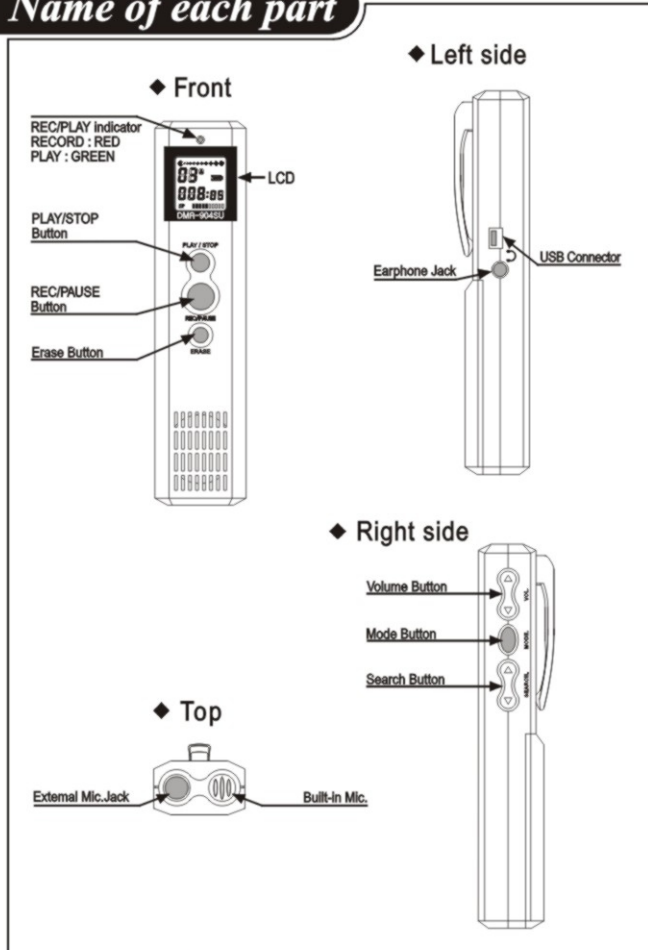
Contents

○ Features	1
○ Name of each part	2
○ Preparation for operating	4
- BATTERY LOADING	4
- SET MENU	5
○ Operating Voice Recorder	6
- RECORDING	6
- CONVENIENT RECORDING FUNCTION	7
- PLAYBACK	8
- CONVENIENT PLAYBACK FUNCTION	9
- ERASE	10
- CONNECTING WITH EXTERNAL APPLIANCE ..	11
○ Caution	13
- CAUTION IN OPERATING	13
- CAUTION IN USING BATTERY	14
- CAUTION FOR SAFETY	14
○ Trouble shooting	15
○ Specification	17
○ Voice Wizard <i>plus</i> Install	18
○ Using the Voice Wizard <i>plus</i>	24

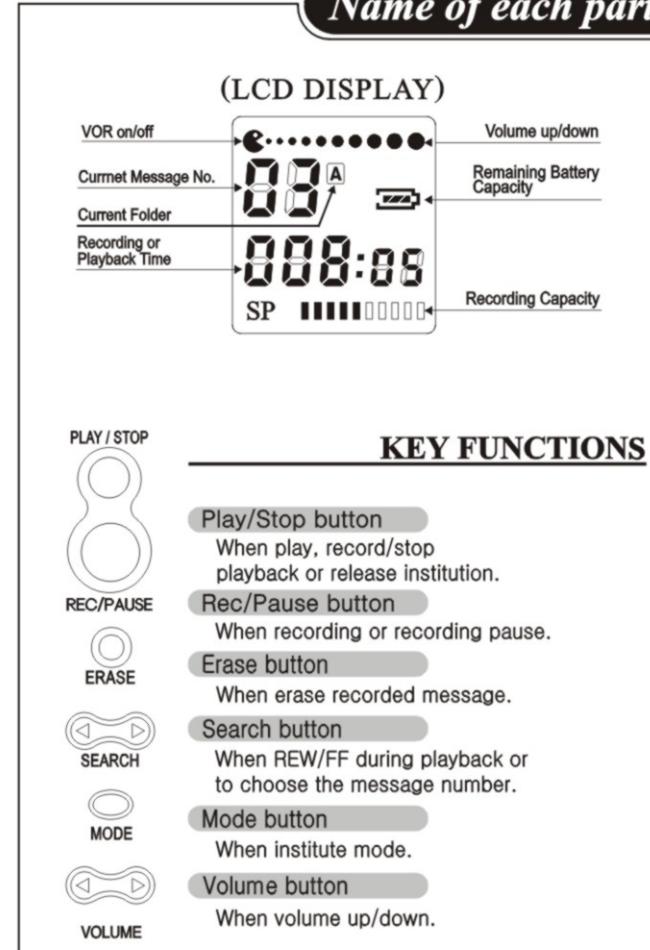
Features

- ◆ **USB Interface**
To adopt USB standard, which is easy to set up and connect with PC
- ◆ **FOLDER & FILE**
Max. 396 recording files are available
Max. 99 voice recording files into each divided A,B,C,D folder
- ◆ **Repeat & A-B Repeat function**
Can play over and again as you choose interval A-B
- ◆ **VOR(Voice Operated Recording)**
Prevents unnecessary recording when there is no sound or voice
- ◆ **Mode function**
Easy to select SP and LP(Only 909SU/918SU) function
Check the total recorded time and remaining record time
VOR on/off and sensitivity selection
- ◆ **Intro Scan function**
To be available for playing only fore part of each message successively
- ◆ **Digital Volume control**
10 steps volume control function
- ◆ **E-mail function**
To be available for E-mailing voice file
- ◆ **External input/output connection**
To be available for mutual recording with another appliances
- ◆ **Automatic power off**
Power will be automatically off if there is no button pressing within 1 minute

Name of each part



Name of each part

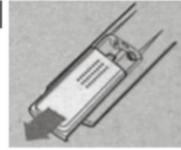


Preparation for operating

● BATTERY LOADING

Be sure replace batteries in power off state'

1. To open the battery cover, press and then slide it off.
Insert two AAA(LR03)batterys according to the polarity indicated and then slide the cover back into place.



Battery Life Time (LR03 alkaline batteries)

Usage	Available Time
Recording	Approximately 10hrs
Speaker Playback(VOL:5)	Approximately 8hrs

2. To check the remaining battery power, press the PLAY/STOP button or REC/PAUSE button in power off state.



For Power **On**

*Press the PLAY/STOP or REC/PAUSE under power off state.

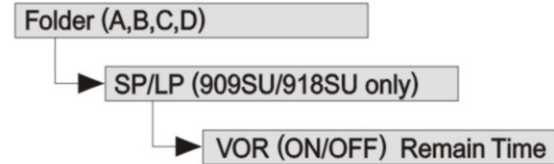
For Power **Off**

- * Voice recorder automatically turns off if no button is pushed within 1 minute in the mode.
- * Press the mode button in the mode until "OFF" appears on LCD with a beep sound.

Preparation for operating

● SET MENU

1. Press PLAY/STOP or REC/PAUSE button, so that the unit gets POWER ON.
2. If you press MODE button, the unit will be operated as follows.

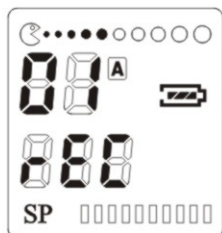


3. Press MODE and FF/REW buttons, you will be selected folder, recording mode and VOR function
4. Press MODE button four times, the unit will be displayed remain recording time.

Operating voice recorder

● RECORDING

1. Press PLAY/STOP or REC/PAUSE button, so that the unit gets POWER ON.
2. Let MIC toward sound source and press REC/PAUSE button. Recording file will be added and recording will be continued.



3. If you press REC/PAUSE button during recording, recording will be paused and if you press REC/PAUSE button once again, PAUSE will be released.
 4. To stop recording, press PLAY/STOP button.
- * Please do test recording in advance to prevent from failing recording.
 - * If MEMORY is exhausted or file number gets more than 99 messages in one folder, "FULL" will be displayed and recording won't be continued.
 - * VOLUME level will be controlled during recording.

Operating voice recorder

● CONVENIENT RECORDING FUNCTION

Simple recording

1. Press REC/PAUSE button more than 3 seconds in power off state, recording will be started.
2. If you press REC/PAUSE button during playback, recording will be started.

INDEX Addition

If you press FF button during recording mode, FILE number will be added and recording will be continued.

REC Monitor

During recording, you can monitor recording message by inserting earphone into earphone jack.

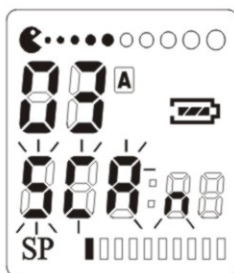
VOR On/Off Control

You can select VOR ON/OFF with MODE button even during recording mode.

Operating voice recorder

● PLAYBACK

1. Press PLAY/STOP or REC/PAUSE button, so that the unit gets POWER ON.
2. Select FILE number FF/REW buttons.
3. If you press PLAY/STOP button, playback will be continued to the final message in the folder.



4. Adjust volume level with volume UP/DOWN button.
5. If you press PLAY/STOP button more than 1second during playback, playback will be paused and if you press PLAY/STOP button one time, pause will be released.
6. To stop playback, press PLAY/STOP button one more time.

Operating voice recorder

● CONVENIENT PLAYBACK FUNCTION

REVIEW & CUE

1. If you press FF/REW buttons shortly at playback mode, the fore & hind recording files will be played.
2. If you press FF/REW buttons for a long time, REW & FF will be proceeded during the button pressing.

SCAN PLAY

If you press PLAY/STOP button for more than 2 second, the fore part of each file in current folder will be played for 5 seconds in order.

FILE REPEAT

If you press MODE button shortly twice during playback, current playing file will be repeated with "rP" displayed.

And then press MODE button, FILE REPEAT will be canceled.

A-B section REPEAT

If you press MODE button one time shortly during playback mode, point A will be selected.

And please press MODE button one more time, point B will be selected.

And then A-B section will be repeated.

And then press MODE button, A-B section REPEAT will be canceled

Operating voice recorder

● ERASE

(Erasing one FILE)

1. If you select a file with FF/REW buttons at stop mode and press ERASE button shortly.

(Selected file number will be blinking on LCD.

For checking the message, the erasing file will be played.)

2. If you press ERASE button one more time, selected file will be erased and following file number will be changed as current file number.

(Erasing all data in FOLDER)

1. If you press ERASE button for more than 3 seconds, current folder will be blinking on LCD.
2. Select a folder with FF/REW button.
3. And then press ERASE button one more time, so that all data in the selected folder will be erased with beep sound.

(Erasing all FOLDERS)

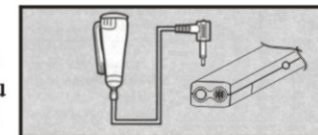
1. If you press ERASE button for more than 3 seconds, current folder will be blinking on LCD.
2. Select all folders with FF/REW button.
3. And then press ERASE button one more time, so that all data in the all folders will be erased with beep sound.

Operating voice recorder

● CONNECTING WITH EXTERNAL APPLIANCE

Recording with external microphone

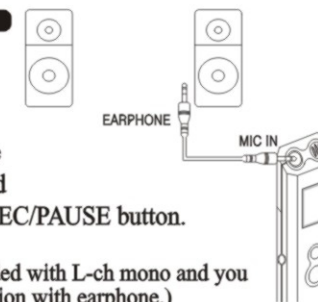
If you connect external microphone into MIC JACK, built-in mic will be excluded and you can record with optional external microphone.



(You can clip external microphone onto your lapel, so that you can take free action. Also, you can record with much better sound quality by approaching sound source.)

In case of recording external appliance into voice recorder unit

AUDIO



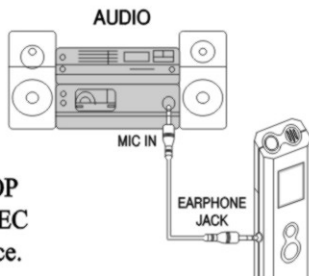
Connect optional audio cable into both earphone of external appliance and MIC of DVR unit and REC/PAUSE button.

(Recording will be proceeded with L-ch mono and you can check recording condition with earphone.)

Operating voice recorder

In case of recording from DVR unit into external appliance

Connect optional audio cable into both earphone jack of DVR unit and mic or external INPUT of external appliance and press both PLAY/STOP button of DVR unit and REC button of external appliance.

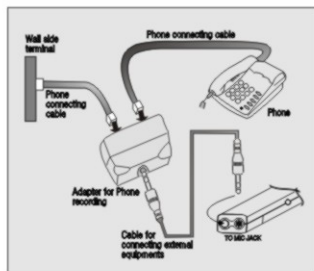


(Do test-recording in advance and you can't adjust volume level with VOLUME UP/DOWN buttons of the DVR unit.)

Telephone recording

Connect optional Tel-line adapter into Tel-line cord as following picture and press REC/PAUSE button once telephone conversation is started.

(Not available for Digital Telephone and the telephone with different MODULAR JACK)



Caution

● CAUTION IN OPERATING

- Do not drop the product and give it a shock. It could cause troubles.
- Do not place the product at the following condition and/or places:
 - Where it is full of high temperature above 60 degrees.
 - At a dusty place.
 - Nears the heaters or from any type of heat sources.
 - In a car with windows closed, especially in summer.
 - At a heavy damp place like a bathroom.
- Any excessive force on the LCD display could cause damages to it and to overall LCD functions.
- A magnetic card such as a credit card or a subway communication ticket may not be working any longer once it is placed on or close to the speaker.
- The seller holds no liability for any damages caused by misuse of the product and any claims from the third party.
- The seller holds no liability for any lost messages which are caused by repair or any other troubles.

Caution

● CAUTION IN USING BATTERY

- Do not have a short circuit, disassemble, heat or put battery in the fire, and do harm to your eyes, also could cause fever and the rupture of a doctor.
- Do not use different kind of battery.
- Take the battery off when you donot use for a long time.

● CAUTION FOR SAFETY

- Take battery off when there are malfunction caused by smoke and heat.
- Do not use in the place where electronic product's operation is prohibited like inside of airplane.
- Do not use in driving and walking, since any accident could be happened.

Trouble shooting

Check following articles first if you find any mal-functional matter.

In case of no LCD display

Check1 Did you check the battery capacity?

→ Replace batteries

Check2 Are both polarities of the battery loading in right way?

→ Load batteries in each right +/- position.

In case of no recording

Check1 Isn't the message number or file FULL?

→ Erase unnecessary message.

Check2 Did you check the battery capacity?

→ Replace batteries

In case of no playback

Check1 Isn't there any recorded message?

→ Check the recording message.

Check2 Did you check the battery capacity?

→ Replace batteries

In case of no sound from speaker

Check1 Isn't your volume at 0(zero) position?

→ Adjust the VOLUME button.

Check2 Isn't your earphone inserted in?

→ Take the Earphone Jack off.

Trouble shooting

In case of no sound from earphone

- Check1 Isn't your volume at 0(zero) position?
→ Adjust the VOLUME button.
- Check2 Is your earphone properly inserted in?
→ Insert the Earphone Jack completely

In case of S/W installation interruption

- Check 1 Does your computer meet system requirement for this product's S/W?
→ Check the system requirement.
(After completing S/W installation, your PC's hard disk should have enough space)

- In case of low battery displaying, operating can't be proceeded properly

Specification

For improvement of product, specifications and design can be changed without previous notice.

Item	Specification		
Model Number	DMR-904SU	DMR-909SU	DMR-918SU
Max Recording Time(SP)	250 min	250 min	510 min
Max Recording Time(LP)	-	540 min	1100 min
Max File No to REC	4folder x 99 files		
Freq. Response	400Hz ~ 3500Hz		
Max Output Power	100mW at THD 10%		
Input	Built-in MIC & 3.5F Mono Jack		
Output	Built-in speaker & 3.5F Mono Jack		
Loud Speaker	Dynamic 23mm		
Dimensions	26(W) x 109(H) x 18(D) mm		
Weight	33g(Without battery)		
Storage Medium	Built-in Flash Memory		
Power Source	DC 3V, "AAA" alkaline x 2		
Battery Life Time	Recording/10hrs, Playback/8hrs		
Condition to use	0° C ~ 40° C		
Basic Accessory	User's manual, Earphone, 2 AAA battery, USB cable, Install CD		
Optional Accessory	Telephone Adapter, Telephone cord, Audio Cable, External Pin MIC, Hand strap		

Voice Wizard *plus* Install

The "Voice Wizard *plus*" software enables you to do the following:

Saving the messages recorded on the voice recorder to your computer

You can save the selected messages to your computer's hard disk.

You can transfer the selected all messages onto a folder or all folders.

When saving the messages on your computer, you can Convert from "vwd file" to "wav file" (8-bit or 16-bit).

Playback the messages on the computer

The messages in the voice recorder or your computer's hard disk can be played back through your computer's speakers. In addition to normal playback, you can enjoy various ways of playback, such as Repeat Play and A-B Repeat Play.

Editing the messages saved to the computer on the computer screen

You can enjoy various editing functions; divide/combine, delete, save. For the messages saved to the computer, you can convert the file saving formats.

Sending voice e-mails

You can send a voice e-mail attaching the selected message(s) from with vwd player file.

Voice Wizard *plus* Install

■ Notice

- To send voice e-mails, you need to register with and Internet provider.
- You may not be able to send or receive e-mails larger than certain file size. Before sending voice e-mails, please check with your Internet provider.

System Requirements

Your computer and system software must meet the following minimum requirements.

- IBM PC/AT or compatible (You cannot use this software with Macintosh.)
- CPU: 200MHz PentiumR processor or higher
- RAM: 64MB or more
- Hard disk space: 40MB or more depending on the size and number of sound files you store.
- CD-ROM drive
- USB port

OS: Microsoft Windows XP, Windows 2000 Professional, Windows Millennium Edition, Windows 98 or Windows 98 Second Edition

Voice Wizard *plus* Install

Installing the "Voice Wizard *plus*" Software

Installing the software

Install the "Voice Wizard *plus*" Software in your computer's hard disk, etc.

■ Notice

- Do not connect the IC recorder to the computer before installing the Software

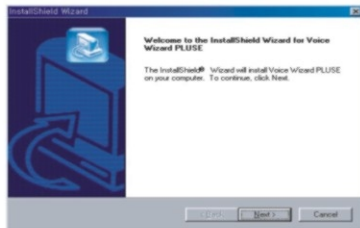
1. Turn on your computer and start up Windows.

■ Notice

- Be sure to close all running programs before installing the software.

2. Insert supplied CD-ROM in the CD-ROM drive.

The installer automatically starts up and the following display appears.



If the installer does not start up, double-click [setup.exe] in the CD.

Voice Wizard *plus* Install

3. Follow the displayed instructions.

4. When the [Finish] dialog box appears, click [OK] to the installation is completed.

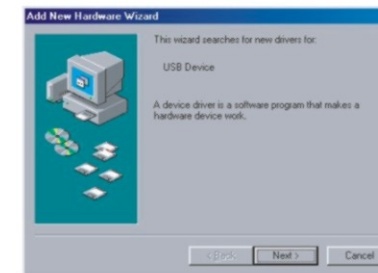
■ Notice

- Do not remove CD-ROM into the CD-ROM drive..

5. Connect the IC recorder to the USB connector of your computer using the supplied USB cable. And then will display bellow window.

■ Notice

- Be sure to install the "Voice Wizard *plus*" Software before connecting the voice recorder to your computer.
- Be sure to power on of the voice recorder before connecting the voice recorder to your computer.



Click "Next" button.

6. Select " Search for the best driver for your device (Recommended)" and click "Next" button.
7. Select " CD-Rom driver and click "Next"button.
8. Follow the displayed instructions.
9. When the [Finish] dialog box appears, click [OK] to the installation is completed.

■ Notice

- If you wish move the software to another drive or directory after it is installed, you need to uninstall the software and then reinstall it. The software does not work properly if you just move the files.

○ Tip

You can also start up the uninstaller by clicking [Start] and then selecting [Settings], [Control Panel], and [Add/Remove Programs].

Connecting the Voice Recorder to your computer

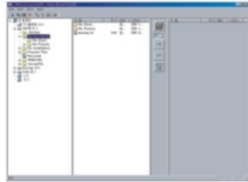
Connect the IC recorder to the USB connector of your computer using the supplied USB cable. USB connection cable can be connected or disconnected when the IC recorder and the computer are turned on or off. The IC recorder is recognized by the computer as soon as the cable is connected, enabling you to proceed with the operation.

■ Notice

- Do not connect more than two USB devices to your computer. Normal operation will not be guaranteed.
- Use of this voice recorder with a USB hub or a USB extension cable is not guaranteed.
- A malfunction may occur depending on the USB Devices connected at any one time.
- Check the remaining battery power of the voice recorder (more than one segment of the battery indicator should be on) before connecting the voice recorder to the computer. If the batteries are exhausted, communication between the voice recorder and the computer may not succeed.
- We recommend you disconnect the cable from the computer when you do not use the Voice Wizard *plus*

USING THE Voice Wizard DATA MANAGE

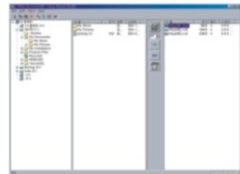
1. Start up Windows.
2. Double click the [Voice Wizard *plus*] in the background, and the Voice Wizard *plus* Software starts up and the min window appears.



3. Click the [Connect] button on the center of the main window.

The messages in the voice recorder are loaded to the computer and displayed on the voice recorder message window.

The data in the voice recorder is loaded to the computer and the message folders and message files and displayed in the voice recorder message Window. When the voice recorder is disconnected, no folders of messages are displayed in the voice recorder message window.



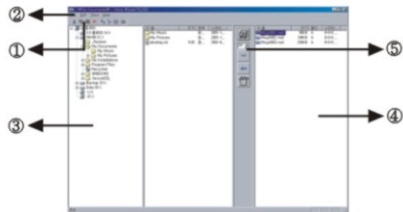
■ Notice

- If no messages are loaded and an error message is displayed after you click [Connect], the voice recorder is not securely connected. Check the connection.

4. To quit the Software

Click the [X] button, on the upper right side of the window or Select [Quit] from the [File] menu.

Names and Functions of the main Window



1. **Toolbar**
The toolbar contains the buttons for frequently used menu command tasks, providing a quick way to accomplish the tasks.
2. **Menu commands**
Enable you to execute various commands.
3. **"PC" message window**
The list of messages stored in your computer's hard disk is displayed.
4. **"Voice RECORDER" message window**
The list of messages in the voice recorder is displayed.
5. **[Connect], [Folder SEL], [UP], [DOWN], [Delete] button.**
[Connect] : Connect between voice record and PC.
[UP] : Transfer the recorded message in the voice recorder to PC.
[DOWN] : Transfer the file in the PC to the voice recorder.
[Delete] : Delete the file in the voice recorder.
[Folder SEL] : Select the folder in the voice recorder.

6. **[Convert] menu.**
For the messages saved to the computer, you can convert the file format from vwd to wave format that will be playback the windows.
7. **"Editor" window**
Contains the button to control the playback/edit operations.
8. **"Status" display window**
The information of the file up/download is displayed.

